

BASIC INFO FOR ALL INTERP

JUDGE TRAINING || ONE PAGERS

CREATED BY NOTRE DAME ACADEMY, TOLEDO

SPEECH
categories

DO

- Bring an electronic device on which you can type speaker feedback
- Give both positive feedback and constructive criticism
- Submit your ranks as soon as you know them
- Take the time you need to input comments - you have until the awards ceremony to update those
- Take attendance before starting the round. To do this, wait until the same number of speakers that are on your ballot are in the room. Then call out the numbers, and each speaker will say "here." If you are missing someone, wait a little longer before telling one of the tournament hosts. If someone is in the wrong room, they'll know that they have to leave and try to find the correct room. This is pretty rare
- Enjoy lunch! It is provided to judges for free
- Arrive one hour before the first round starts

DON'T

- Comment on what the competitor is wearing
- Give any feedback aloud
- Discuss speeches/performances you saw with other people at the tournament (there is a chance they will judge the same speaker later, and the judge needs to go in with only their thoughts and feedback in mind)
- Copy and paste the same comments for more than one competitor
- Judge someone you know. If you walk into a round and you know someone in there, find the tournament manager so that you can be reassigned. Also, tell your team's coach so that they can "block" you from judging them in the future
- Don't use a countdown timer to time speakers, only use a stopwatch

QUICK TERMS *to know*

ROUND: Each competition room is called a "round." There are typically 4-5 rounds at season tournaments. In each round, anywhere from 2-7 competitors will compete against each other.

RANKS: In each round, you will "rank" the speakers from 1 (being the best) to 6 (needs to improve the most). If you only have a round of four students, then you would still rank 1 (best) to 4 (needs most work).

PLUGGED: Judges who do not have a round assigned to them may be "plugged" if another judge doesn't show up to their round.

BLAST: You may hear, "rounds have been blasted!", which means that room/competitor/judge assignments have been sent out to your emails and/or phone.

HUMOROUS INTERPRETATION

JUDGE TRAINING || ONE PAGERS || HI

CREATED BY NOTRE DAME ACADEMY, TOLEDO

SPEECH
categories

WHAT IS HI?

Humorous Interpretation (HI) is often referred to as the "funny category"...hence the fact that it has "humor" in the title...duh. ;)

- 10 minutes with a 30 second grace period (use a stopwatch to time, not a timer. If they go over time, do not stop them)
- Only give time signals if they ask
- The individual will be portraying 1+ characters
- Students do not write their piece, it is a pre-existing script

THINGS TO CONSIDER SPECIFICALLY IN HI

Characterization

Did the speaker create characters that were developed and defined? (KEEP IN MIND: there does not need to be more than one character in an HI piece)
Were the speaker's characters consistent both vocally and physically?

THINGS TO CONSIDER IN ALL SPEECH CATEGORIES

Vocal Quality

Was the speaker's voice easy to understand and be heard? Did they speak at an appropriate rate?

Vocal Variety

Did the speaker alter rate, volume, pitch, and tone to engage the audience?

Physical Presentation

Did the speaker use appropriate gestures, facial expressions, and body language?

Professionalism

Was the speaker poised and confident? Were they attentive and courteous to others?

DRAMATIC INTERPRETATION

JUDGE TRAINING || ONE PAGERS || DI

CREATED BY NOTRE DAME ACADEMY, TOLEDO

SPEECH
categories

WHAT IS DI?

Fair warning, this category gets its name from performances that are dramatic, dark, and/or triggering. Students take a piece (usually a monologue, but not always) and portray a character.

- 10 minutes with a 30 second grace period (use a stopwatch to time, not a timer. If they go over time, do not stop them)
- Only give time signals if they ask
- The individual will be portraying 1+ characters
- Students do not write their piece, it is a pre-existing script

THINGS TO CONSIDER SPECIFICALLY IN DI

Characterization

Did the speaker create characters that were developed and defined? (KEEP IN MIND: the performer may have only one character, or multiple characters. Either option is okay!)

Were the speaker's characters consistent both vocally and physically?

THINGS TO CONSIDER IN ALL SPEECH CATEGORIES

Vocal Quality

Was the speaker's voice easy to understand and be heard? Did they speak at an appropriate rate?

Vocal Variety

Did the speaker alter rate, volume, pitch, and tone to engage the audience?

Physical Presentation

Did the speaker use appropriate gestures, facial expressions, and body language?

Professionalism

Was the speaker poised and confident? Were they attentive and courteous to others?

PROGRAM ORAL INTERP

JUDGE TRAINING || ONE PAGERS || POI

CREATED BY NOTRE DAME ACADEMY, TOLEDO

SPEECH
categories

WHAT IS POI?

This is a super unique category for two reasons: (1) The speaker can use a binder, (2) Their piece is a combination of both prose and poetry, and all of the pieces build to a single theme.

The binder can be any color or size. It is typically a small black binder, but if it is not, that is OKAY!

- 10 minutes with a 30 second grace period (use a stopwatch to time, not a timer. If they go over time, do not stop them)
- Only give time signals if they ask
- Speakers did not write the individual pieces of their program, so you cannot comment on the writing. However, you *can* comment on their interpretation of the literature (see below).

THINGS TO CONSIDER SPECIFICALLY IN POI

Interpretation of Literature

Did the speaker present material in a logical manner?

Did the speaker vary appropriate emotions to reflect the changes in subject matter?

THINGS TO CONSIDER IN ALL SPEECH CATEGORIES

Vocal Quality

Was the speaker's voice easy to understand and be heard? Did they speak at an appropriate rate?

Vocal Variety

Did the speaker alter rate, volume, pitch, and tone to engage the audience?

Physical Presentation

Did the speaker use appropriate gestures, facial expressions, and body language?

Professionalism

Was the speaker poised and confident? Were they attentive and courteous to others?

DUO INTERPRETATION

JUDGE TRAINING || ONE PAGERS || DUO
CREATED BY NOTRE DAME ACADEMY, TOLEDO

SPEECH
categories

WHAT IS DUO?

This is the only Interp category that has two people! Here is what is even more interesting about it, though...the performers cannot look at or touch each other, except for in their introduction! Pieces in this category can be dramatic and/or humorous. There is no minimum or maximum number of characters required in the performance. It is up to the performers!

- 10 minutes with a 30 second grace period (use a stopwatch to time, not a timer. If they go over time, do not stop them)
- Only give time signals if they ask
- Students do not write their piece, it is a pre-existing script.

HINT

When leaving feedback, leave comments for each performer, and do not focus on only one. Make sure the comments are fairly even. A recommendation for specifying who you are talking about in your comments is to say "performer in the blue shirt" or "performer with their hair in a pony tail."

THINGS TO CONSIDER SPECIFICALLY IN DUO

Physical Presentation (in addition to what is in the gray box)

The speakers cannot make direct eye contact or touch during the performance (except for in their introduction when they tell you the title of the piece). If they do look at each other or touch, it is at your discretion to rank them lower or not. Did the speakers create characters that were developed and defined? (KEEP IN MIND: the performers may have only one character, or multiple characters. Either option is okay!)

Were the characters consistent both vocally and physically?

THINGS TO CONSIDER IN ALL SPEECH CATEGORIES

Vocal Quality

Was the speaker's voice easy to understand and be heard? Did they speak at an appropriate rate?

Vocal Variety

Did the speaker alter rate, volume, pitch, and tone to engage the audience?

Physical Presentation

Did the speaker use appropriate gestures, facial expressions, and body language?

Professionalism

Was the speaker poised and confident? Were they attentive and courteous to others?

EXTEMPORANEOUS SPEAKING

JUDGE TRAINING || ONE PAGERS || USX AND IX

CREATED BY NOTRE DAME ACADEMY, TOLEDO

SPEECH
categories

WHAT ARE USX AND IX?

These categories are WILD in that the speakers were given a question to answer only 30 minutes before they perform for you! In United States Extemp (USX), the questions will be about American current events, and in International Extemp (IX), the questions will be about international current events.

Before the speaker begins, make sure they are in the right place by asking them their competitor number. They will then give you a slip of paper with their question on it.

DIFFERENCES FROM OTHER INTERP

(1) The speakers do not sit in the room with you, so do not panic if you get to the room and no one is there! Speakers will come in one at a time, and they know to knock before entering. It is recommended to just leave the door open after each speaker so that the next one knows to come in.

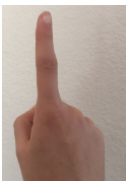
(2) Whereas speeches in other categories are 10 minutes with a 30 second grace, speeches in USX and IX are 7 minutes with a thirty second grace.

(3) You are required to give time signals. See the visuals below!

5 MINUTES



6.5 MINUTES



6 MINUTES



7 MINUTES

raise this fist at 7.5 minutes

THINGS TO CONSIDER IN ALL SPEECH CATEGORIES

Vocal Quality

Was the speaker's voice easy to understand and be heard? Did they speak at an appropriate rate?

Vocal Variety

Did the speaker alter rate, volume, pitch, and tone to engage the audience?

Physical Presentation

Did the speaker use appropriate gestures, facial expressions, and body language?

Professionalism

Was the speaker poised and confident? Were they attentive and courteous to others?

Speech Content

Did the speaker answer the exact question as written on the printed slip?

Did the speaker present the speech with a clear organizational pattern that was easy to follow?

Did the speaker provide logical analysis supported with current sources and relevant evidence?

Did the speaker cite source(s) and date(s) for materials referenced?

DECLAMATION

JUDGE TRAINING || ONE PAGERS || DEC
CREATED BY NOTRE DAME ACADEMY, TOLEDO

SPEECH
categories

WHAT IS DEC?

In Declamation, the speaker is presenting a speech they did not write as though it is their own (while giving credit to the author, of course). Because the speaker is presenting a speech that they did not write, when giving comments, you cannot comment on the content in their speech, as that is out of their control.

- 10 minutes with a 30 second grace period (use a stopwatch to time, not a timer. If they go over time, do not stop them)
- Only give time signals if they ask

THINGS TO CONSIDER SPECIFICALLY IN DEC

Interpretation

Did the speaker capture the tones, emotions, and intent of the original oration?

Did the speaker deliver the oration in a manner that enhanced the messages of the speech?

THINGS TO CONSIDER IN ALL SPEECH CATEGORIES

Vocal Quality

Was the speaker's voice easy to understand and be heard? Did they speak at an appropriate rate?

Vocal Variety

Did the speaker alter rate, volume, pitch, and tone to engage the audience?

Physical Presentation

Did the speaker use appropriate gestures, facial expressions, and body language?

Professionalism

Was the speaker poised and confident? Were they attentive and courteous to others?

INFORMATIVE SPEAKING

JUDGE TRAINING || ONE PAGERS || INFO

CREATED BY NOTRE DAME ACADEMY, TOLEDO

SPEECH
categories

WHAT IS INFO?

This category is SO COOL in that the speaker is allowed to use props!!! With that being said, props are not required, so they do not need to use them. Speakers in this category have written their speech, and the purpose of the speech is to share information on a topic that interests them.

- 10 minutes with a 30 second grace period (use a stopwatch to time, not a timer. If they go over time, do not stop them)
- Only give time signals if they ask

THINGS TO CONSIDER SPECIFICALLY IN INFO

Speech Content

Did the speaker create a speech that had clear organization, in-depth content development, and credible sources?

Did the speaker cite any sources or research that was used in the speech?

Did the speaker use dynamic vocabulary, sentence structure, and other rhetorical devices?

Visual Aid (OPTIONAL)

Was the speaker's choice to utilize or not utilize a visual effective and relevant?

If utilized, were the visual aids visible, neat, and professional?

If utilized, did the speaker effectively present the visual aid to enhance the presentation?

THINGS TO CONSIDER IN ALL SPEECH CATEGORIES

Vocal Quality

Was the speaker's voice easy to understand and be heard? Did they speak at an appropriate rate?

Vocal Variety

Did the speaker alter rate, volume, pitch, and tone to engage the audience?

Physical Presentation

Did the speaker use appropriate gestures, facial expressions, and body language?

Professionalism

Was the speaker poised and confident? Were they attentive and courteous to others?

ORIGINAL ORATORY

JUDGE TRAINING || ONE PAGERS || OO

CREATED BY NOTRE DAME ACADEMY, TOLEDO

SPEECH
categories

WHAT IS OO?

In Original Oratory, speakers have complete freedom in choosing a defined topic and a clear purpose. They write this speech themselves. Speakers can write their speech using any variety of expository, narrative, persuasive, or dramatic techniques.

- 10 minutes with a 30 second grace period (use a stopwatch to time, not a timer. If they go over time, do not stop them)
- Only give time signals if they ask

THINGS TO CONSIDER SPECIFICALLY IN OO

Speech Content

Did the speaker create an oration that had a defined topic, clear purpose, and an interesting interpretation?

Did the speaker cite any sources or research that they used?

Was the speech organized?

Did the speaker use dynamic vocabulary, sentence structure, and other rhetorical devices?

THINGS TO CONSIDER IN ALL SPEECH CATEGORIES

Vocal Quality

Was the speaker's voice easy to understand and be heard? Did they speak at an appropriate rate?

Vocal Variety

Did the speaker alter rate, volume, pitch, and tone to engage the audience?

Physical Presentation

Did the speaker use appropriate gestures, facial expressions, and body language?

Professionalism

Was the speaker poised and confident? Were they attentive and courteous to others?

MIDDLE SCHOOL INTERP

JUDGE TRAINING || ONE PAGERS || MS-INT

CREATED BY NOTRE DAME ACADEMY, TOLEDO

SPEECH
categories

WHAT IS MS-INT?

Read (NOT NECESSARILY MEMORIZED).

The competitor reads/performs a program from a manuscript, which can include a combination of any of the three genres (prose, poetry, drama) around a central theme. The competitor should use his or her voice, gestures, face, etc. to convey the proper emotion of the pieces and engage the audience.

- 10 minutes with a 30 second grace period (use a stopwatch to time, not a timer. If they go over time, do not stop them)
- Only give time signals if they ask

THINGS TO CONSIDER SPECIFICALLY IN MS-INT

Interpretation of Literature

Did the speaker present material in a logical manner?

Did the speaker vary appropriate emotions to reflect the changes in subject matter?

THINGS TO CONSIDER IN ALL SPEECH CATEGORIES

Vocal Quality

Was the speaker's voice easy to understand and be heard? Did they speak at an appropriate rate?

Vocal Variety

Did the speaker alter rate, volume, pitch, and tone to engage the audience?

Physical Presentation

Did the speaker use appropriate gestures, facial expressions, and body language?

Professionalism

Was the speaker poised and confident? Were they attentive and courteous to others?

MIDDLE SCHOOL DECLAMATION

JUDGE TRAINING || ONE PAGERS || MS-DEC

CREATED BY NOTRE DAME ACADEMY, TOLEDO

SPEECH
categories

WHAT IS MS-DEC?

Memorized

The competitor delivers a speech that was written by someone else and previously delivered. The speech may be a former Original Oratory or a published commencement speech, tribute speech, eulogy, etc. The competitor should use his or her voice, gestures, face, etc. to convey the proper message of the speech.

- 10 minutes with a 30 second grace period (use a stopwatch to time, not a timer. If they go over time, do not stop them)
- Only give time signals if they ask

THINGS TO CONSIDER SPECIFICALLY IN MS-DEC

Interpretation

Did the speaker capture the tones, emotions, and intent of the original oration?

Did the speaker deliver the oration in a manner that enhanced the messages of the speech?

THINGS TO CONSIDER IN ALL SPEECH CATEGORIES

Vocal Quality

Was the speaker's voice easy to understand and be heard? Did they speak at an appropriate rate?

Vocal Variety

Did the speaker alter rate, volume, pitch, and tone to engage the audience?

Physical Presentation

Did the speaker use appropriate gestures, facial expressions, and body language?

Professionalism

Was the speaker poised and confident? Were they attentive and courteous to others?

WHAT IS MS-OO?

Memorized

The competitor writes and delivers a speech. Many speeches discuss a contemporary problem or issue for our society. However, speeches may also strengthen a cause, eulogize an individual or discuss any topic of concern or interest to the student. A successful speech will include personal examples, “real world” examples, and support. The competitor should use his or her voice, gestures, face, etc. to convey the proper message of the speech.

- 10 minutes with a 30 second grace period (use a stopwatch to time, not a timer. If they go over time, do not stop them)
- Only give time signals if they ask

THINGS TO CONSIDER SPECIFICALLY IN MS-OO

Speech Content

Did the speaker create an oration that had a defined topic, clear purpose, and an interesting interpretation?

Did the speaker cite any sources or research that they used?

Was the speech organized?

Did the speaker use dynamic vocabulary, sentence structure, and other rhetorical devices?

THINGS TO CONSIDER IN ALL SPEECH CATEGORIES

Vocal Quality

Was the speaker’s voice easy to understand and be heard? Did they speak at an appropriate rate?

Vocal Variety

Did the speaker alter rate, volume, pitch, and tone to engage the audience?

Physical Presentation

Did the speaker use appropriate gestures, facial expressions, and body language?

Professionalism

Was the speaker poised and confident? Were they attentive and courteous to others?